

FairPoint Communications Wholesale



Carrier Ethernet Services

FairPoint wholesale has the largest owned and managed fiber network in northern New England, with over 80% of our central offices enabled for Carrier Ethernet Services (CES). This offers you the unmatched ability to connect to over 95% of New England businesses.

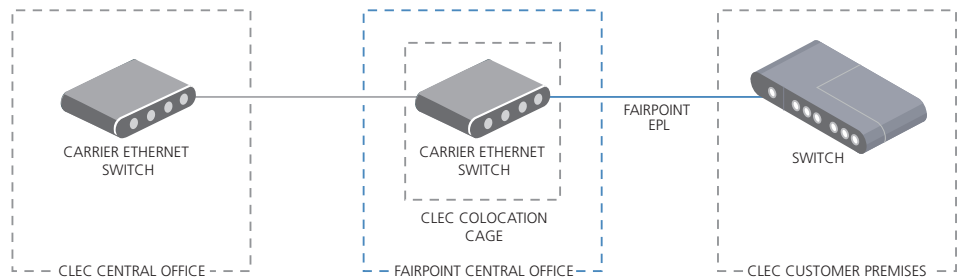
Our CES Ethernet services are designed to provide the flexibility and reliability the wholesale market demands. We offer E-Line services including EPL and EVPL for point-to-point and point-to-multi-point solutions with speeds ranging from 5Mbps up to a robust 1Gbps. FairPoint's Class of Service (CoS) capability allows you to prioritize traffic based on the needs of your applications.

E-Line

Our E-Line services deliver single point and multi-point connections to locations with the same consistent reliability and security of private line connections.

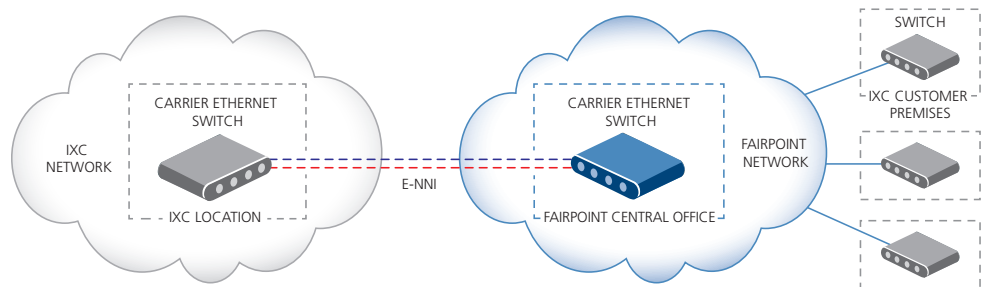
ETHERNET PRIVATE LINE (EPL)

Our Ethernet Private Line offers a dedicated connection between two locations. Using a wide range of easily scalable speeds, your customers can send their data at the speed they need with the confidence that the low latency and packet loss of Ethernet will deliver that data flawlessly over a secure connection.



ETHERNET VIRTUAL PRIVATE LINE (EVPL)

Ethernet Virtual Private Line delivers a point-to-multipoint solution, enabling you to connect your network to your customers' locations while utilizing fewer ports than conventional solutions. This means you have a single, easily managed solution in place across your network. Our flexibility allows you to select the exact bandwidth you need at each location.



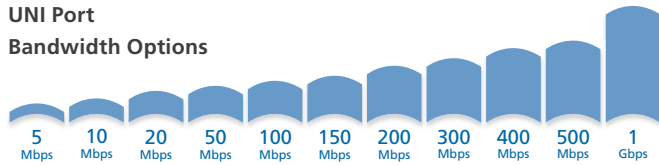
Carrier Ethernet Services

E-LINE Port and Speed Options

To increase your traffic efficiency and simplify pricing, FairPoint created seven Metro Ethernet Service Areas (MESA) Interconnection Ports. These MESAs are designed to connect you to our network across all three states in northern New England.

UNI Port – connect at a designated end point within a defined FairPoint Metro Ethernet Service Area (MESA).

**UNI Port
Bandwidth Options**



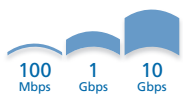
Hub Interconnection Port – a network-to-network interface between the FairPoint network and the Customer’s network that creates a regional hub. We have six hub connection points throughout the FairPoint footprint.

**Hub Interconnection Port
Bandwidth Options**

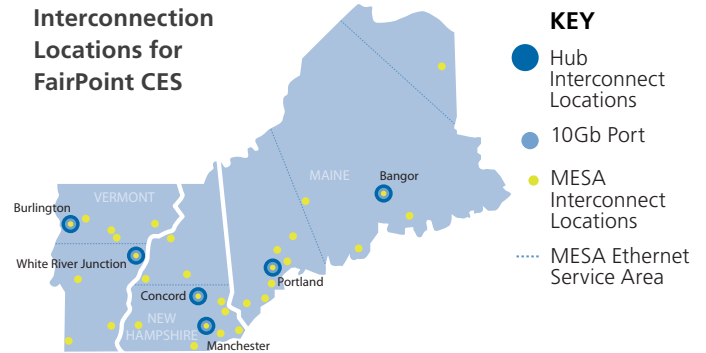


MESA Interconnection Port – connect to a service multiplexed port which aggregates traffic within a geographical area. We have 32 MESA connection points within our seven defined MESAs.

**MESA Interconnection Port
Bandwidth Options**



**Interconnection
Locations for
FairPoint CES**



Class of Service

FairPoint E-LINE Carrier Ethernet Service has a Class of Service (CoS) Option that allows you to prioritize your traffic depending upon the Quality of Service (QoS) metrics your applications require. We offer four CoS levels: Standard, Expedite, Priority and Critical. Separate Ethernet Virtual Circuits (EVCs) are required for each CoS and only a single CoS is available for each EVC.

The QoS metrics differ depending upon whether your sites are within a given MESA (Intra-MESA) or between two or more MESAs (Hub/Inter-MESA) and are shown in the following table:

Class of Service	Packet Delivery	Latency	Jitter	Best for
Standard	N/A	N/A	N/A	Email, Internet Access
Expedite	99.90%	<50ms <35ms	N/A	Traffic Requiring Low Latency
Priority	99.99%	<40ms <25ms	<5ms <3ms	VoIP, Packetized Video
Critical	99.99%	<30ms <15ms	<5ms <3ms	Critical Data, Real Time Video

KEY Hub/Inter-MESA Locations Intra-MESA Locations

FairPoint QoS metrics are backed by a Service Level Agreement (SLA) in which we credit a portion of your monthly service fee if we fail to meet the metrics as specified in your Master Service Agreement.

